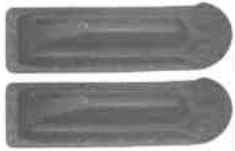

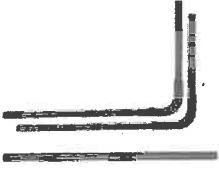







Installation Instructions

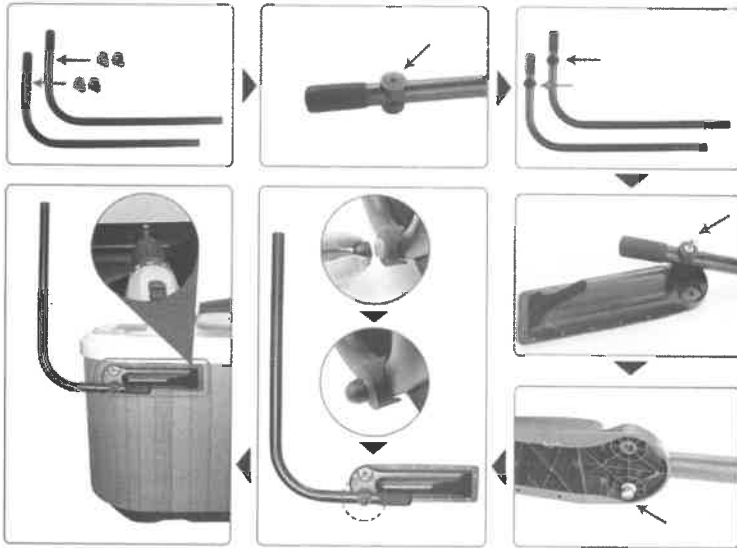
1) Hardware and parts list :

NO.	Item	Photo	QTY	NO.	Item	Photo	QTY
1.	Mounting Brackets		2pcs	2.	Pivot Arm		2pcs
3.	Support Arm; Center Coupler		3pcs	4.	Large/ Small Black Dome Cap		38pcs
5.	Bushing		4pcs	6.	Hex Cap Bolt; Flat Washer; Nylon Locknut		8pcs
7.	Mounting screws (M5 x 40mm)		24pcs	8.	Self tapping screws (M4.2 x 16mm)		12pcs

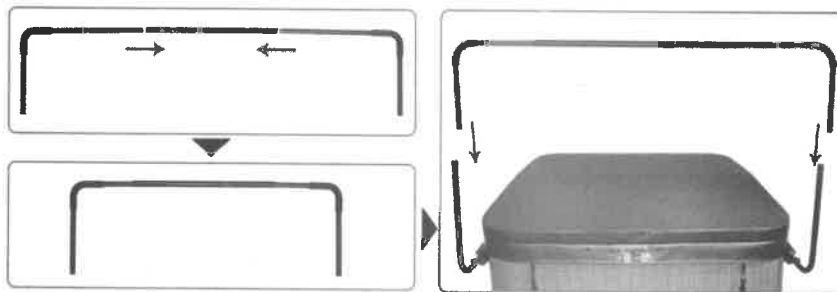
2) Installation Steps:

Step 1: Connect the Pivot Arm and two Bushings to the Mounting Brackets, using one Hex Cap Bolt, two Flat Washers, and one Nylon Locknut, press the decorative Large Black Dome Caps over the heads of the Hex Cap Bolts, as shown in the below picture. Then attach the Mounting Brackets to the left and right sides of the spa with the Mounting Screws.

Note: If necessary, slide the Wrench behind the Mounting Bracket to tighten the Nylon Locknut.



Step 3: Insert the Support Arms into the Center Coupler Piece. Then join the Support Arms Section into the Pivot Arms.



Step 4:

Lay the Cover Lift on the spa cover. Position ①, using the Self Tapping Screws to fasten the Support Arms and Coupler Piece together. Position ②, using the Self Tapping Screws to fasten the Support Arms to the Pivot Arms. Then press the decorative Small Black Dome Caps over the heads of all the exposed screws.

